



# Animal Kingdom

VETERINARY CARE CENTER

*Caring Pet Care*

**Our mission is to be the best provider of caring pet care to area families and their pets.**

We will accomplish this by practicing these values every day.

- **Our attitude will be that of friendliness, competence, and compassion.**
- **We will provide valuable services, information, and products to our clients that will enrich their lives by enhancing the lives of their animal companions.**
- **We will receive a fair value for our goods and services so that we may maintain a healthy business and provide for our staff members.**
- **We recognize that the backbone of the business is our people. Our common efforts will make this clinic a fun and comfortable place to work. We will cooperate and support each other as we strive to learn and improve every day.**

# PUPPY VETERINARY CARE SCHEDULE

**One of the great pleasures of being a veterinarian is to help welcome a puppy into their new family. We can assist with this by performing a thorough physical examination and then recommending a series of basic vaccinations to help protect the puppy from disease. Our intention is to lay a good foundation of immunity that can be maintained throughout their lifetime. We will also recommend other procedures and treatments that should be done within the puppy's first year of life.**

## 8 Weeks

Exam  
1st Puppy DAPP (Distemper Combo Vaccine)  
Fecal Testing  
Dewormer  
Flea/Tick/ Heartworm Prevention

## 12 Weeks

Exam  
2nd Puppy DAPPL4 (2nd Distemper/ 1st Lepto)  
Bordetella Intranasal Vaccine  
1st Lyme Vaccine  
Dewormer  
Flea/Tick/ Heartworm Prevention

## 16 Weeks

Exam  
3rd Puppy DAPPL4 (3rd Distemper/ 2nd Lepto)  
2nd Lyme Vaccine  
1 year Rabies Vaccine  
Dewormer  
Flea/Tick/ Heartworm Prevention

- Continue prevention year round

## 6-12 Months

Spay/Neuter

- Your veterinarian will discuss the best time to spay or neuter your pet based on their individual needs.

Microchip

## 14-16 Months

Annual Wellness Exam  
Distemper Vaccine  
Lepto & Lyme vaccines  
3 year Rabies Vaccine

- You Rabies vaccine can only be a three year vaccine if it is given on or before the due date of the previous vaccine due to Iowa Law

Bordetella Intranasal Vaccine  
Heartworm and Fecal Testing





# Vaccine Reactions

There is a chance that your pet may experience one or more of the following side effects after vaccination. Usually these are mild, start within a few hours of vaccination, and resolve within a few days. *Contact us if these side effects last longer than THREE days.*

**SNEEZING – DISCOMFORT/SWELLING AT INJECTION SITE  
MILD FEVER DIMINISHED APPETITE/ACTIVITY**

*More serious side effects are rare and may indicate an allergic reaction. These can occur within minutes to hours after vaccination. If any of these signs occur please contact us or an emergency clinic ASAP. Severe reactions can be life-threatening and are medical emergencies.*

**VOMITING – DIARRHEA – HIVES  
DIFFICULTY BREATHING – COLLAPSE**

**For after-hours emergencies or in the event that we are not available please contact:**

**Blue Pearl Emergency Hospital  
319-841-5161  
755 Capital Drive SW  
Cedar Rapids, IA 52404**



**Animal Kingdom**  
VETERINARY CARE CENTER

# Routine Care

*Routine care refers to the non-emergency care that is needed to keep your dog healthy. This includes vaccinations, spay/neutering, microchipping, as well as prevention for fleas, ticks and heartworm.*

**DAPP:** This vaccine is given to your puppy at 8, 12, and 16 weeks. It needs to be boosted every 1-3 years throughout their life. The diseases that this vaccine protects against can be severe and sometimes deadly.

- Distemper: Viral infection that spreads and affects the whole body
- Hepatitis: Viral infection that is spread by contaminated bodily fluids that can affect the eyes, liver, and kidneys.
- Parvovirus: Viral disease which severely affects the gastrointestinal tract.
- Parainfluenza: Viral infection that will severely affect the respiratory system.

**Lepto:** Leptospirosis is a disease caused by infection with Leptospira bacteria. These bacteria can be found worldwide in soil and water. This bacteria is transmitted through the urine of wildlife or by drinking contaminated water. This disease is also zoonotic, meaning it can be transmitted from animals to humans.

**Bordetella:** This vaccine is for a respiratory disease called kennel cough. If your dog is boarded, groomed, goes to the dog park or puppy classes this vaccine is likely required. It is also a good idea if your dog is ever around other dogs or shares a fence with other dogs at home. This is given at 12 weeks of age and then yearly for the rest of their life.

**Lyme:** This vaccine is for Lyme disease, which is transferred by ticks. This is an optional vaccine but highly recommended for all dogs, as ticks can be found in your backyard as well as the woods. This is given at 12 weeks and again at 16 weeks, it is boosted annually from there.

**Rabies:** Vaccination for rabies will be given to your pet at 16 weeks of age, this vaccine will last 1 year. If you come back on or before the due date the following year for your puppies next vaccine it will be a 3 year rabies vaccine. The rabies vaccine is required by Iowa law because the disease is fatal if contracted and can be transmitted to humans and other animals.

**Spay/Neuter:** This procedure prevents unwanted puppies and avoids potentially serious future medical problems. The spay or neuter procedure is usually done between 6 and 12 months of age. This is done as an outpatient procedure meaning that your puppy will come home to you the same day!

**Microchipping:** This is a simple procedure in which a small microchip, the size of a grain of rice, is injected beneath the skin. If your pet is lost and someone finds it, they can be brought to a vet clinic or shelter to be scanned to see if they have a microchip. Because it is a larger needle we do this at the time of spay/neuter but it can be done anytime.

**Heartworm/Tick Borne Testing:** This blood test is run on a small amount of blood that we send to our outside lab for testing. It detects antibodies of adult heartworms as well as the three tick borne illnesses; Anaplasmosis, Lyme and Ehrlichiosis. Heartworms are actual worms that develop within the heart and are transmitted by mosquitos. The tick borne diseases are transmitted by various tick species.



## What if my pet has been bitten?

- Consult your veterinarian immediately and report the bite to local animal control authorities.
- Even if your dog, cat or ferret has a current vaccination, it should be revaccinated immediately, kept under the owner's control, and observed for a period as specified by state law or local ordinance (normally 45 days or more). Animals with expired vaccinations will need to be evaluated on a case-by-case basis.
- Dogs, cats and ferrets that have never been vaccinated and are exposed to a rabid animal may need to be euthanized or placed in strict isolation for six months.
- Animals other than dogs, cats, and ferrets that are bitten by a rabid or potentially rabid animal may need to be euthanized immediately.

## What if I am bitten?

- Don't panic, but don't ignore the bite. Wash the wound thoroughly and vigorously with soap and lots of water.
- Call your physician immediately and explain how you were bitten. Follow the doctor's advice. If necessary, your physician will give you the post exposure treatment recommended by the United States Public Health Service and may also treat you for other possible infections that could result from the bite.
- If possible, confine or capture the animal under a large box or other container if that can be done safely. Once captured, don't try to pick up the animal. Call the local animal control authorities to collect it. If the animal cannot be captured, try to memorize its appearance (size, color, etc.) and where it went after biting you.
- If it is a wild animal, only try to capture it if you can do so without getting bitten again. If the animal cannot be contained and must be killed to prevent its escape, do so without damaging the head. The brain will be needed to test for rabies.
- Report the bite to the local health department. Prompt and appropriate treatment after being bitten and before the disease develops can stop the infection and prevent the disease.

For more information, visit,  
American Veterinary Medical Association  
[www.avma.org](http://www.avma.org)



[www.worldrabiesday.org](http://www.worldrabiesday.org)



American Veterinary Medical Association  
1931 North Meacham Road, Suite 100  
Schaumburg, Illinois 60173 - 4360  
Phone: 847.925.8070 • Fax: 847.925.1329  
[www.avma.org](http://www.avma.org) • [AVMAinfo@avma.org](mailto:AVMAinfo@avma.org)

# Rabies



Brought to you by your veterinarian and the  
American Veterinary Medical Association

# Spay & Neuter

We recommend sterilizing all pets, male and female. When to do this is dependent on your specific pet. We want to allow them all the hormones they need to grow, but then remove those hormones before they start causing problems. Surgery usually takes place between 6-12 months of age. At the time of surgery, it is important for your pet to be up-to-date on its vaccines since they will be around other animals in the hospital. The main advantage of spaying and neutering is the prevention of accidental pregnancies, but there are many other medical and behavioral advantages to consider.

## Advantages of Spaying

- Prevention of heat cycles which will eliminate the urge for your pet to escape to find a mate
- Prevention of a life-threatening uterine infection called Pyometra
- Reduction of uterine and ovarian cancer
- Spaying before your pet's first heat cycle greatly reduces the chance of breast cancer development. The chance of breast cancer increases after every heat cycle.

## Advantages of Neutering

- Eliminate the urge for your pet to escape and find a mate
- Prevention of testicular cancer
- Reduction of prostate disease, perianal hernias and tumors.
- Reduction of urine marking, aggression, and mounting behaviors.



## The Procedure

When your pet is admitted for surgery, a pre-surgical exam will be performed. Pre-operative blood work is recommended to ensure we are using the safest anesthesia protocol possible for your pet. If everything is normal, your pet will be anesthetized. An intravenous catheter is placed to administer anesthetic drugs and to provide fluid therapy during the surgery. An endotracheal tube is placed to allow for the delivery of oxygen and gas anesthetic. A surgical technician monitors blood pressure, oxygen level and other vitals closely throughout the procedure.

## After Surgery

When you come to pick up your pet later that same day, a surgical technician will discuss all home care instructions with you and answer any questions you may have. Restricted activity is the primary post-operative care you will need to provide. Your pet will also go home with pain medication and an e-collar to prevent them from licking their incision. The collar will need to stay on your pet for 14 days while they heal to prevent re-opening the incision and infection.



**Animal Kingdom**  
VETERINARY CARE CENTER

# Why Microchip Your Pet?



**PetLink™**



Microchipping is the best way to help reunite lost pets with their owners. On average, 8-10 million pets are lost in the US each year. Only a fraction of those pets, about 22%, find their way back home after they've reached a shelter. That is a large part due to lack of pet identification.

There are different methods to identifying your pet, including collar tags and tattoos, but neither provides a complete solution for lost pets. Collars can be lost and tattoos can be altered. Microchips are permanent.

Not only is microchipping permanent, but it's also safe and convenient. It's as easy to administer a vaccine, and the microchip will last a pet's lifetime. The microchip is approximately the size of a grain of rice, which is implanted into a pet using a single use syringe. Each microchip contains a code that is unique and readable by scanners. When a lost pet arrives at a shelter, the serial number can be identified and traced back to the pet's owner.

The microchip that we use is a true, no-cost pet registration database. It is very easy to register; You can go online by using the provided website on the card provided the day of chip administration. There will be a few simple questions about you and your animal. If you move, it is free to change your information. It is critical that you keep with current information so that if your pet ever goes missing, reuniting your pet with you is swift and easy!



**Animal Kingdom**  
VETERINARY CARE CENTER



# INTESTINAL PARASITES

*If your pet is showing any signs of being infected by an intestinal parasite, please call us today.*

## ROUNDWORMS

- Infects both dogs and cats and is often passed to puppies and kittens in utero and from mother's milk
- Acquired by ingesting contaminated soil or feces, or eating infected rodents
- Live in small intestine and cause intestinal blockage and death
- Symptoms: mild or intermittent vomiting and diarrhea, pot-bellied appearance, anemia, weakness, stunted growth

## TAPEWORMS

- Infects both dogs and cats
- Acquired by ingesting infected fleas, small rodents or rabbits
- Adult tapeworms can grow long and block the intestines
- Symptoms: segments in the feces and/or around the anus that resemble grains of rice, vomiting, diarrhea, fatigue, lethargy, weight loss

## GIARDIA

- Infects dogs and cats
- Acquired by ingesting contaminated feces, food or water
- Symptoms: chronic soft stools or watery diarrhea, weight loss, lethargy

## HOOKWORMS

- Infects both dogs and cats and can be transmitted during nursing
- Acquired by ingesting larvae or larvae penetrating skin or feet
- Attach to lining of small intestine and feed off the blood of their host
- Can cause sudden collapse and death, especially in young animals
- Symptoms: tarry or bloody diarrhea, weight loss, emaciation, anemia, weakness
- Can be passed to humans

## WHIPWORMS

- Infects dogs; extremely rare in cats
- Acquired by ingesting eggs in contaminated soil or feces
- Small, thin worms that attach to the large intestine
- Symptoms: diarrhea, bloody stools, weight loss, anemia, fatigue

## COCCIDIA

- Infects dogs and cats, especially common in young and stressed animals
- Acquired by ingesting contaminated soil or feces or an infected rodent
- Can cause death in young animals



## MUST-KNOW FACTS ABOUT HEARTWORM TREATMENT

- ♥ While effective and necessary, treatment is expensive. A single course of treatment costs many times the cost of heartworm prevention.
- ♥ Your dog may require multiple follow-up heartworm tests after treatment to be sure the heartworms have been eliminated. Your veterinarian may also need to run other diagnostic tests to know how advanced the infection is or how many worms are involved.
- ♥ Keep your dog on heartworm prevention after he or she has been treated. You don't want them to become infected again!

For more in-depth information about heartworm disease, as well as its prevention, diagnosis, and treatment, visit the American Heartworm Society website at [heartwormsociety.org](http://heartwormsociety.org).



AMERICAN  
HEARTWORM  
SOCIETY™  
EST. 1974

American Heartworm Society  
PO Box 1352  
Holly Springs, NC 27540, USA  
[www.heartwormsociety.org](http://www.heartwormsociety.org)  
© 2023 American Heartworm Society

Printing underwritten  
by an educational grant from  
 **Boehringer  
Ingelheim**



## HEARTWORM DISEASE IN DOGS

### MUST-KNOW FACTS ABOUT HEARTWORM DISEASE

- ♥ Heartworm disease is one of the most common—and **most deadly**—diseases in dogs.
- ♥ More than a million dogs in the U.S. are infected with heartworm disease each year, even though it can be **easily prevented**.
- ♥ Dogs with heartworm can be found in all **50 states**.
- ♥ Heartworms are **spread by mosquitoes**. If you see, swat at, or have been bitten by mosquitoes where you live, that means your dog is at risk.
- ♥ While heartworm disease in dogs can be treated, **treatment** can be costly and time consuming. **Prevention** is easy and affordable.



AMERICAN  
HEARTWORM  
SOCIETY™  
EST. 1974

## HEARTWORM DISEASE IN DOGS

### HOW DO DOGS GET HEARTWORMS?

Heartworms are spread by mosquitoes infected with heartworm larvae. If an infected mosquito bites an unprotected dog, the chances are almost 100% the dog will become infected. And once your dog is infected, he or she can also become a source of heartworm infection to other pets.

### WHAT HAPPENS IF MY DOG GETS HEARTWORMS?

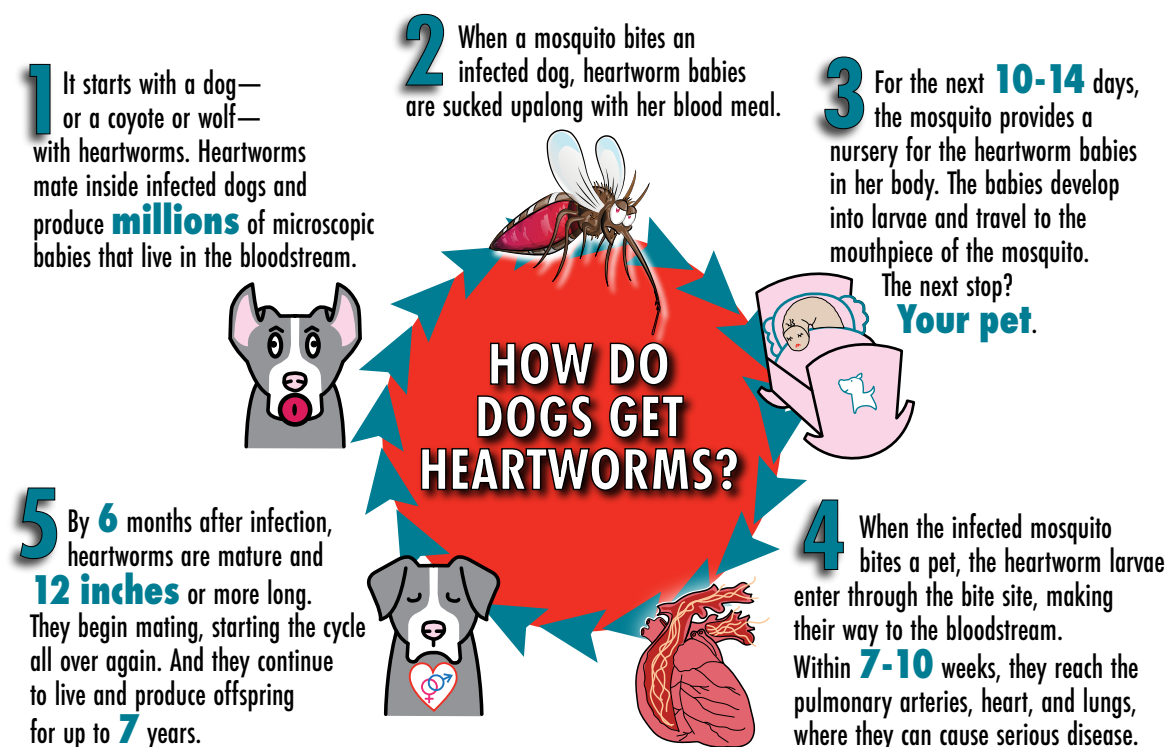
When an infected mosquito bites your dog, the tiny heartworm larvae left behind are too small for you to see—but they're mobile. Over the next couple of months, the growing heartworms make their way

through your dog's skin layers, then enter the bloodstream. Their final destination: the blood vessels, heart and lungs. Here heartworms make themselves at home and grow bigger still.

Within just six months after becoming infected, your dog could be harboring heartworms that are up to 12 inches long—or even longer.

Once mature, heartworms living inside your dog can also mate and reproduce. And if mosquitoes feed on your infected dog, within just a few weeks they can spread new heartworms to other animals.

The damage from heartworms is progressive, and so are the signs of



# Heartworm Prevention & Treatment

Some of the preventatives that we offer here at Animal Kingdom also treat for a variety of intestinal parasites. There are some combinations that are also effective against fleas and ticks as well. All of the preventative options require that your pet have a negative heartworm test before starting them. Ideally, these parasite preventatives are given year-round as our winters become more and more mild.

 **INTERCEPTOR<sup>®</sup> PLUS**  
(milbemycin oxime/praziquantel)

**Pr♥Heart<sup>®</sup> 6**  
(moxidectin)

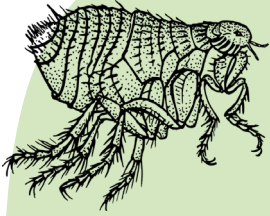
**SimparicaTRIO<sup>™</sup>**  
sarolaner/moxidectin/pyrantel

Heartworms			
Fleas	Protect with Credelio		
Ticks	Protect with Credelio		
Roundworms			
Hookworms			
Whipworms			
Tapeworms			

## Treatment

Once heartworms are detected, the most common method of treatment is by using a medication called Immiticide, an arsenic-containing compound used to kill immature and adult heartworms. This is given via injections deep in the lower back muscles of your dog, twice, 24 hours apart. We do the treatments here in the clinic and keep them hospitalized throughout the day for monitoring. They may need further treatment in 4-6 months depending on the results of repeat testing. ***The best way to avoid a heartworm infection is using a monthly preventative year round.***

# Flea & Tick Prevention



Fleas are small, wingless, leaping, blood sucking external insect. The adults feed off the blood of mammals and birds but are carried by a number of different animals. Fleas start from eggs, which fall off infested animals and develop into larvae indoors on carpet,



bedding, etc. It can take several weeks for these immature stages that are already in the environment to complete their development, potentially exposing the pet to new fleas every day until they run through their life cycle. This is why it is important to keep your pet on a monthly preventative year round. **Fleas can cause skin damage, itching, secondary skin infections and tapeworms.** Ticks are hard-shelled, blood sucking parasites that are very prevalent in Iowa. They live in both wooded areas as well as residential yards and shrubbery. Ticks will attach themselves to any warm-blooded mammal they encounter. There are multiple tick species in Iowa; Deer tick, Brown dog tick, Lone Star tick, and American dog tick. Nymph stages of ticks are quite small while adult ticks vary in size and become much larger once they have attached and begun feeding. Ticks can attach to you or your pets and transmit diseases like Lyme, Ehrlichia, Anaplasmosis, and Rocky Mountain Spotted Fever. **There is a vaccination against Lyme disease but not the other diseases. The best way to prevent tick borne disease in your pets is to keep them on prevention year round.**



## Credelio™ (lotilaner)

Credelio is a monthly chewable that protects against fleas and ticks. Credelio has a faster kill rate for ticks than TRIO and is often recommended for that reason. It kills most ticks within 4 hours. Credelio is approved for puppies and dogs older than 8 weeks and weighing more than 4.4 pounds. Most dogs take this tablet like a treat. Credelio also kills adult fleas within 12 hours.

## Simparica TRIO™ sarolaner/moxidectin/pyrantel

Monthly Simparica Trio prevents heartworm disease, kills adult fleas and is indicated for the treatment and prevention of flea infestations, the treatment and control of tick infestations, and the treatment and control of roundworm and hookworm infections in dogs and puppies 8 weeks of age and older, and weighing 2.8 pounds or greater. Simparica Trio blocks the pathogen that may cause Lyme disease by killing deer ticks.

## seresto®

Seresto® kills and repels fleas and ticks through contact — no biting required. A Seresto® collar stays effective for 8 continuous months. Seresto® collars are odorless and non-greasy (no messy monthly treatments). Seresto® is water-resistant†, and can stay on while swimming or bathing— however, frequent swimming and baths will reduce efficacy from 8 to 5 months.

# Look for the VOHC<sup>®</sup> Seal of Acceptance

Accumulation of dental plaque, exacerbated by tartar, causes periodontal (gum) disease, a common infection that causes oral pain. The VOHC<sup>®</sup> Seal of Acceptance confirms that a product has met or exceeded the preset VOHC plaque and/or tartar reduction standard in dogs and cats, in controlled, randomized, blinded trials.

Products carrying the VOHC Accepted Seal include dental diets, dental chews & raw-hides, brushes, water additives, dentifrices, oral gels, sprays and sealants.

Visit [www.VOHC.org](http://www.VOHC.org) to see the current list of VOHC Accepted Products.



## Signs Of Dental Disease

### 1. The Breath Test

Sniff your dogs breath. Normal dog breath isn't particularly fresh-smelling but if it's especially offensive it is a good idea to take him to the vet .

### 2. Examine Their Mouth

Once a week with your pet facing you, lift their lips and examine the gums and teeth. The gums should be pink, not red, and the teeth should be mostly white without large accumulations of brown tartar

### 3. Tooth Decay

Bacteria and plaque-forming foods can cause build-up on a dog's teeth. This can harden into tartar, possibly causing gingivitis, receding gums, and tooth loss.

## Dental Care At Home

Just like us, brushing daily is going to be the best way to prevent dental disease at home. However , we know that this can be difficult to accomplish with your pet so there are additional products like treats, diets, toys, and water additives that can be used to help keep your pets mouth healthy, longer. To find a complete list of products visit the Veterinary Oral Health Council's website.





# Recommended Diets

At Animal Kingdom, we take the welfare of our patients very seriously, and want to help you choose the safest and most nutritious diets available. We base those recommendations on published scientific literature and the advice of highly trained specialists and researchers. We recommend brands that meet the highest standards of WSAVA, and those diets are as follows, and in no specific order:



These brands meet the highest standards of WSAVA by having full-time appropriate nutritional experts, performing feeding trials, owning their own manufacturing facilities, having exceptional quality control, and proving their commitment to animal health and wellness by performing and publishing research.

For more information, we recommend the following links:

[https://wsava.org/wp-content/uploads/2021/04/Selecting-a-pet-food-for-your-pet-updated-2021\\_WSAVA-Global-Nutrition-Toolkit.pdf](https://wsava.org/wp-content/uploads/2021/04/Selecting-a-pet-food-for-your-pet-updated-2021_WSAVA-Global-Nutrition-Toolkit.pdf)

<https://vetnutrition.tufts.edu/>

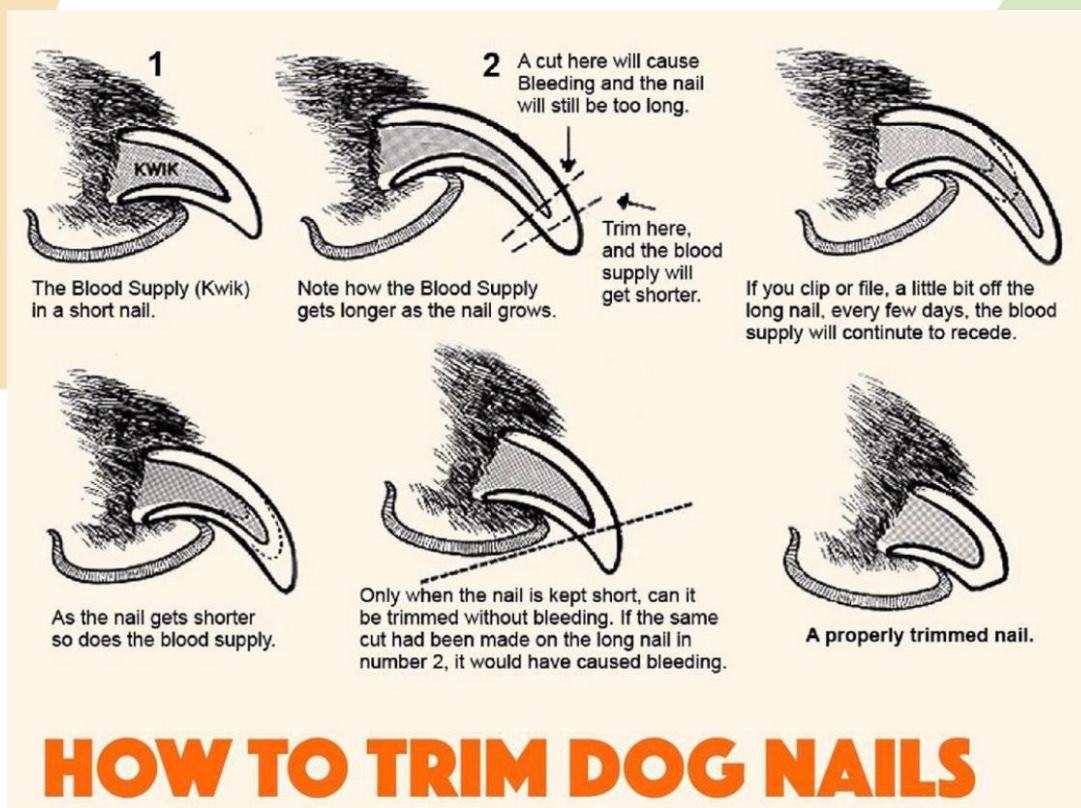
<https://www.alltradesdvm.com/topics/nutrition>

If you are considering making a diet change, please discuss the following nutritional risk factors with your doctor:

- **Life stage considerations**
- **Abnormal Body Condition**
- **Poor skin or hair coat**
- **Systemic or dental disease**
- **Snacks, table food > 10% of total calories**
- **Unconventional diet**
- **Gastrointestinal upset**



# Nail Trimming



It is a good idea to get your dog used to having their feet touched before you attempt a nail trim. So start this at a young age. Rub your hand up and down their leg and then gently press each individual toe- and be sure to give them lots of praise and some treats as you do this.

- Begin by spreading each of your dog's feet to inspect for dirt and debris.
- Use sharp nail clippers to cut off the tip of each nail at a slight angle, just above the point where it begins to curve.
- Take care to avoid the quick, a vein that runs into the nail. This pink area can be seen through the nail. If your dog has black nails, however, the quick will not be as easily seen, so be careful.
- If you accidentally cut into the quick, it may bleed, in which case you can use a quick-stop powder to stop the bleeding.

# Common Household Poisons



## Medications & Supplements

Pain Killers  
Cold medications  
Anti-Cancer Drugs  
Antidepressants  
Vitamins  
Diet Pills



## Household Cleaners, Pesticides, Fertilizers and Poisons

Lawn chemicals and fertilizers  
Rat poison  
Antifreeze  
Citronella Candles  
Pool chemicals



## Candy & Chocolate

Chocolate  
Coffee  
Onions & garlic  
Raisins & Grapes  
Products sweetened with xylitol



## Plants

English Ivy  
Calla Lilly  
Jade  
Carnations  
Nigfhtshade

## What To Do If Your Pet Is Poisoned

Don't panic! Rapid response is important but panicking can interfere with the process of helping your pet.

Take 60 seconds to safely collect and have at hand any material involved. This will be helpful to your vet and/or ASPCA Pet Poison hotline to determine what poisons are involved. If you have to take your pet to the vet, make sure to bring the products container with you.

If you witness your pet consuming material that you think may be toxic, do not hesitate to seek emergency assistance, even if you do not see any immediate adverse effects.


## Calling the ASPCA Animal Poison Control Center

The number is **888-426-4435**. There is a consultation fee for this service. The Poison Control Center is available 24/7, 365 days a year. When you call be ready with the following information;

- The species, breed, age, sex, weight and number of animals involved
- The animal's symptoms
- Information regarding the exposure, including the agent (if known), the amount of the agent involved and the time elapsed since the time of exposure
- Have the product and container/packaging available for reference
- 

**If your animal is having seizures, losing consciousness, or having trouble breathing bring your pet immediately to your local emergency clinic.**

# PET INSURANCE REVIEW

By pet parents, for pet parents 

Finding the right pet insurance has never been easier.



Scan the QR Code  
or go to  
[PETINSURANCEREVIEW.COM](http://PETINSURANCEREVIEW.COM)



Provide a few details  
about your furry  
family member



Read reviews  
& get quotes  
from the top  
providers instantly

[Get a Quote & Compare](#)

See what thousands of pet parents are saying about providers,  
and the difference having pet insurance has made for them.

**trupanion**<sup>™</sup>  
Medical insurance for the life of your pet.

**healthypaws**<sup>®</sup>  
PET INSURANCE & FOUNDATION

**HARTVILLE**  
PET INSURANCE

**Lemonade**

**ASPCA** PET HEALTH  
INSURANCE

**fetch**  
PET INSURANCE

**spot**  
pet insurance

**FIGO**

**pumpkin**

**AKC** PET  
INSURANCE  
Underwritten by Independence American Insurance Co.



**EMBRACE**  
PET INSURANCE

**petpartners**

Because they are not just pets... they are **family**. 

Pet Insurance Review is the most trusted pet insurance review site in the industry. Visit us and see why.

[www.petinsurancereview.com](http://www.petinsurancereview.com)

# Housetraining Your Puppy

## Key Steps To Ensure Proper House Training

The first step in turning an adult dog into a reliable house pet is to embrace the key concept; There is no such thing as a “partially” house-trained dog. They are either house-trained or they are not.

Why is this so important? Because, if you have a dog who is “sometimes” reliable, you have a dog who really isn't getting the picture, probably because no one took the time to teach it to them properly in the first place. This is where you come in!

Before training, make sure you're not handling a sick dog. If you have a dog who was perfectly house-trained and is no longer, you must determine that what you have is a behavior problem, not a medical problem. If you've just adopted an adult dog, you should have them seen by a vet before assuming they are not house-trained. Not only is ruling out medical problems a fair thing to do, but it's also the only sensible route; You won't be able to change the habits of a dog who can't help what they're doing wrong.

Once you have ruled out medical problems, house training uses the same principles whether you are training a puppy or an adult dog. You need to teach your dog what is right before you can correct them for what is wrong. To do this, spend at least two weeks ensuring they have nothing but successes by never giving them the opportunity to make a mistake. You can do this by:

- Leashing them to you in the house so you can monitor their every move during the training period. If they start to have an accident, correct them with a sharp “no”, take him outside, and give him a “go” command. Some people will use “go potty” and then praise them for doing it right.
- Use a kennel to contain them whenever they are not on a leash with you. A grown dog can be confined a lot longer than a puppy can be.
- Take them outside first thing in the morning, as soon as you get home from being gone, just before bed time, anytime they get up from a nap and 30 minutes to an hour after eating. Always remember to give the “go” command and PRAISE, PRAISE, PRAISE when they do as you wish.



The most difficult part of house training is often the owner's attitude toward limiting the pet's options to make mistakes; a crate and a leash. People seem to be able to accept crating and leashing a puppy but do not like the idea of doing this with an adult dog. Bear in mind you won't need to do this forever, just for now.

If you have been consistent, your dog will likely have a good idea of what's expected of them at the end of two weeks. At this point you can begin to give them more freedom, letting them continue to earn full access to the house.

Accidents will happen. If you catch them, give a sharp “no” take them right outside and praise when they go outside in the desired place. Make sure you clean up the mess quickly and thoroughly do that your pet does not have the desire to refresh their scent. If you continue to find messes, go back to the basics and start again.

Consistency and patience are necessary for house training any dog. If you have both, you will likely succeed. Without them, you will have a difficult time getting the results you want. If you are still not getting anywhere after a couple of weeks, ask your veterinarian for a referral to a qualified behaviorist.



# Boarding

## Pepper Hills Kennels

1858 Curtis Bridge Road NE  
North Liberty, IA 52317  
(319)-626-2622

## Camp Bow Wow

860 N. 20th Avenue  
Hiawatha, IA 52333  
(319)-393-3647

## Just Dogs Playcare

4100 Westcor Court  
Coralville, IA 52241  
(319)-545-7111

## Bed's & Biscuits Boarding

1986 Paris Road  
Central City, IA 52214  
(319)-438-6263

## Half Moon Kennels

3181 Half Moon Avenue NW  
Tiffin, IA 52340  
(319)-545-3031

## Pooch Palace

1938 Utah Avenue NE  
Solon, IA 52333  
(319)-624-5164

## Cedar Run

2705 Stonegate Court  
Hiawatha, IA 52233  
(319)-393-1362

## Two Sister's

52 280th Street  
West Branch, IA 52358  
(319)-371-3200

## Heartland Kennels

4008 80th Street  
Fairfax, IA 52228  
(319)-846-2009

## Apple Creek Kennel

650 51st Street  
Marion, IA 52302  
(319)-784-7372

## Canine Country Cottage

20607 County Road E45  
Anamosa, IA 52205  
(319)-489-2256

## Diersen's Canine Country Club

3181 Half Moon Avenue NW  
Tiffin, IA 52340  
(319)-545-3031

# Grooming

## Bed's & Biscuits Boarding

1986 Paris Road  
Central City, IA 52214  
(319)-438-6263

## Apple Creek Kennel

650 51st Street  
Marion, IA 52302  
(319)-784-7372

## The Groom Station

117 West Main Street  
West Branch, IA 52358  
(319)-643-5099

## Alicia's Sirius Styling

220 S. Dubuque St.  
Solon, IA 52333  
(319)-624-4122

## Pawz Grooming Salon

1601 N. Highway 965  
North Liberty, IA 52317  
(319)-861-899

## Cedar Run

2705 Stonegate Court  
Hiawatha, IA 52233  
(319)-393-1362

## Diersen's Canine Country Club

3181 Half Moon Avenue NW  
Tiffin, IA 52340  
(319)-545-3031

## Heartland Kennels

4008 80th Street  
Fairfax, IA 52228  
(319)-846-2009

## Yuppy Puppy

3710 Crippen Ct. NE  
North Liberty, IA 52317  
(319)-665-6192



# Emergency Services & Urgent Care

## **Emergency Clinics**

### Blue Pearl Cedar Rapids

755 Capital Drive SW  
Cedar Rapids, Iowa 52404  
(319)-841-5161

### Blue Pearl Des Moines

4631 Merle Hay Road  
Des Moines, Iowa 50322  
(515)-727-4872

### Iowa Veterinary Specialists

6110 Creston Avenue  
Des Moines, Iowa 50321  
(515)-280-3100

## **Urgent Care Clinics**

### Bright Eyes & Bushy Tails

3030 Northgate Dr. Suite B  
Iowa City, Iowa 52245  
(319)-338-3605

